

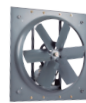


# Mallas

## Protección

Se recomiendan para instalaciones en las cuales sea necesario proteger el interior del equipo, el recinto y sobre todo, evita el contacto directo con piezas en movimiento; salvaguardando la integridad de las personas y maquinaria que se encuentre a su alrededor.

## Gamas aplicables



HIB-T



HGB-T



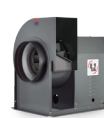
TAT



TGT



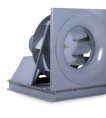
CL



CM



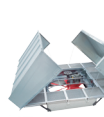
CR



BNC



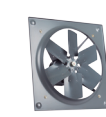
BIL



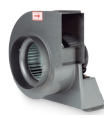
DX



HXA-P



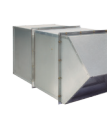
HXBT



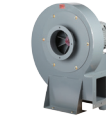
CEB-T



DA



WX

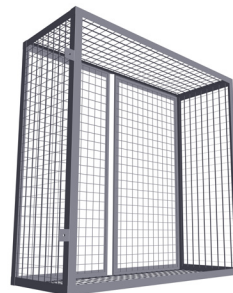
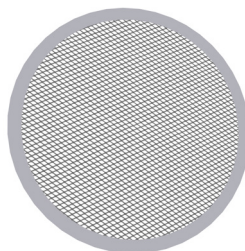
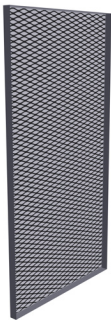


CSB-T

## Características

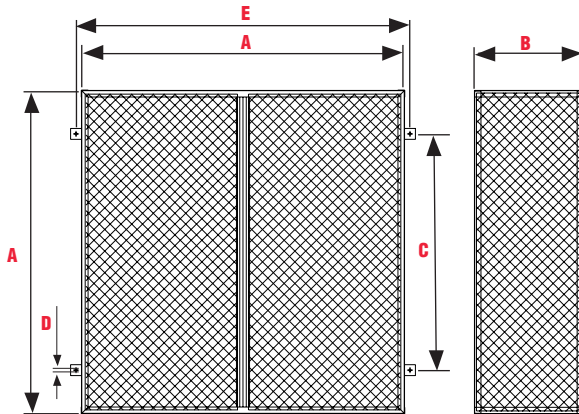
- Materiales de fabricación: lámina desplegada o alambre pulido.
- Diseño realizado de acuerdo al equipo a utilizar (axial, centrífugo, plenum, tubular, etc.)
- Los modelos circulares pueden ser fabricados con lámina desplegada galvanizada o alambre con recubrimiento, galvanizado, tropicalizado o electroforético.
- Sistema de sujeción removible.

## Tipos de mallas





### Dimensiones



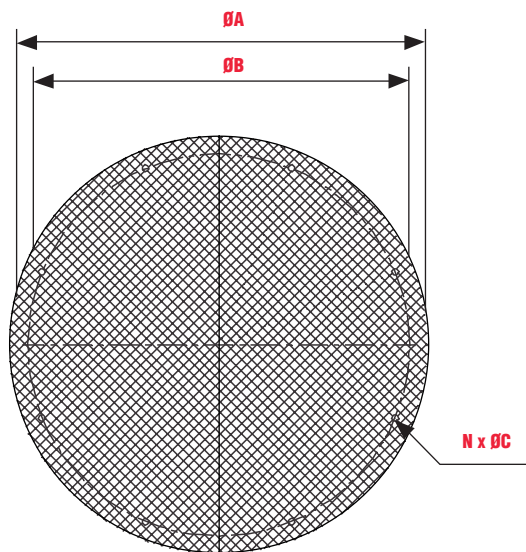
Para los equipos:

HXB-T · HIB-T · HGB-T · HXA-P

Dimensiones en mm  
Barrenos de diámetro 3/8"

| Modelo   | M-400 | M-500 | M-630 | M-800 | M-1000 | M-1250 | M-1500 | M-1800 |
|----------|-------|-------|-------|-------|--------|--------|--------|--------|
| <b>A</b> | 590   | 720   | 900   | 1120  | 1290   | 1560   | 1860   | 2150   |
| <b>B</b> | 250   | 250   | 350   | 420   | 500    | 500    | 630    | 800    |
| <b>C</b> | 450   | 550   | 600   | 800   | 800    | 800    | 1600   | 1760   |
| <b>D</b> | 10    | 10    | 10    | 10    | 10     | 10     | 10     | 10     |
| <b>E</b> | 690   | 820   | 1000  | 1220  | 1390   | 1660   | 1960   | 2045   |

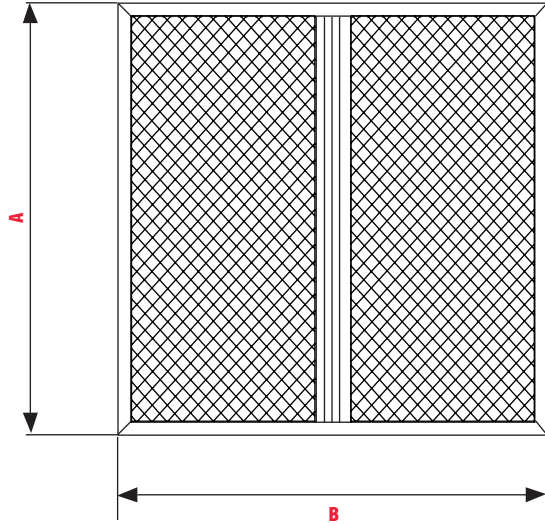
### Dimensiones



Para los equipos:

CM

| Modelo         | ØA   |          | ØB   |          | ØC   |      | N  |
|----------------|------|----------|------|----------|------|------|----|
|                | mm   | in       | mm   | in       | mm   | in   |    |
| <b>CM-250</b>  | 306  | 12 1/6   | 286  | 11 1/4   | 7.9  | 5/16 | 6  |
| <b>CM-280</b>  | 348  | 13 11/16 | 322  | 12 11/16 | 7.9  | 5/16 | 6  |
| <b>CM-315</b>  | 382  | 15 1/16  | 355  | 14       | 7.9  | 5/16 | 8  |
| <b>CM-355</b>  | 422  | 16 5/8   | 395  | 15 9/16  | 7.9  | 5/16 | 8  |
| <b>CM-400</b>  | 466  | 18 3/8   | 438  | 17 1/4   | 7.9  | 5/16 | 8  |
| <b>CM-450</b>  | 524  | 20 5/8   | 487  | 19 3/16  | 7.9  | 5/16 | 8  |
| <b>CM-500</b>  | 574  | 22 5/8   | 542  | 21 5/16  | 7.9  | 5/16 | 8  |
| <b>CM-560</b>  | 634  | 24 15/16 | 606  | 23 7/8   | 9.5  | 3/8  | 8  |
| <b>CM-630</b>  | 704  | 27 11/16 | 673  | 26 1/2   | 9.5  | 3/8  | 8  |
| <b>CM-710</b>  | 784  | 30 7/8   | 750  | 29 1/2   | 11.5 | 7/16 | 8  |
| <b>CM-800</b>  | 872  | 34 5/16  | 800  | 31 1/2   | 11.5 | 7/16 | 12 |
| <b>CM-900</b>  | 972  | 38 1/4   | 937  | 36 7/8   | 11.5 | 7/16 | 12 |
| <b>CM-1000</b> | 1078 | 42 7/16  | 1043 | 41 1/16  | 11.5 | 7/16 | 12 |
| <b>CM-1120</b> | 1206 | 47 1/2   | 1108 | 43 5/8   | 13   | 1/2  | 14 |
| <b>CM-1250</b> | 1340 | 52 3/4   | 1257 | 49 1/2   | 13   | 1/2  | 14 |
| <b>CM-1400</b> | 1500 | 59       | 1395 | 55       | 13   | 1/2  | 14 |

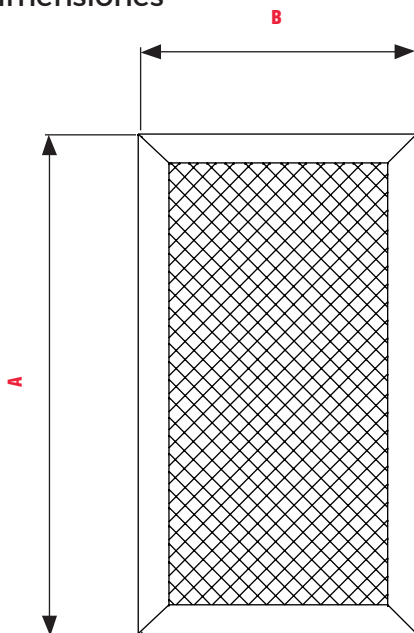
**Dimensiones**

**Para los equipos:**
**WX**

Dimensiones en mm

| Modelo         | A    | B    |
|----------------|------|------|
| <b>WX-500</b>  | 510  | 510  |
| <b>WX-630</b>  | 727  | 727  |
| <b>WX-800</b>  | 927  | 927  |
| <b>WX-1000</b> | 1097 | 1097 |
| <b>WX-1250</b> | 1385 | 1385 |
| <b>WX-1500</b> | 1689 | 1689 |

Dimensiones en in

| Modelo         | A       | B       |
|----------------|---------|---------|
| <b>WX-500</b>  | 21 1/4  | 21 1/4  |
| <b>WX-630</b>  | 28 5/8  | 28 5/8  |
| <b>WX-800</b>  | 36 1/2  | 36 1/2  |
| <b>WX-1000</b> | 43 3/16 | 43 3/16 |
| <b>WX-1250</b> | 54 1/2  | 54 1/2  |
| <b>WX-1500</b> | 66 1/2  | 66 1/2  |

**Dimensiones**

**Para los equipos:**
**CM**

| Modelo         | A    |          | B    |          |
|----------------|------|----------|------|----------|
|                | mm   | in       | mm   | in       |
| <b>CM-250</b>  | 325  | 12 13/16 | 182  | 7 3/16   |
| <b>CM-280</b>  | 366  | 14 7/16  | 202  | 7 15/16  |
| <b>CM-315</b>  | 409  | 16 1/8   | 225  | 8 7/8    |
| <b>CM-355</b>  | 458  | 18 1/16  | 249  | 9 13/16  |
| <b>CM-400</b>  | 511  | 20 1/8   | 275  | 10 13/16 |
| <b>CM-450</b>  | 573  | 22 9/16  | 310  | 12 3/16  |
| <b>CM-500</b>  | 643  | 25 5/16  | 347  | 13 11/16 |
| <b>CM-560</b>  | 720  | 28 3/8   | 388  | 15 1/4   |
| <b>CM-630</b>  | 806  | 31 3/4   | 435  | 17 1/8   |
| <b>CM-710</b>  | 906  | 35 3/4   | 481  | 18 7/8   |
| <b>CM-800</b>  | 1014 | 40       | 535  | 21 1/8   |
| <b>CM-900</b>  | 1138 | 44 3/4   | 597  | 23 4/8   |
| <b>CM-1000</b> | 1274 | 50 1/4   | 665  | 26 1/8   |
| <b>CM-1120</b> | 1526 | 60       | 845  | 33 1/4   |
| <b>CM-1250</b> | 1625 | 64       | 915  | 36       |
| <b>CM-1400</b> | 1905 | 75       | 1028 | 40 1/2   |
| <b>CM-1600</b> | 2022 | 79 5/8   | 1061 | 41 3/4   |
| <b>CM-1800</b> | 2274 | 89 1/2   | 1193 | 46 15/16 |
| <b>CM-2000</b> | 2562 | 100 7/8  | 1325 | 52 3/16  |